

## EX41922 系列

強固級非網管 2埠10/100/1000BASE +2埠100/1000SFP 乙太網路交換器



### 產品介紹

EX41922系列為一款輕巧型強固級非網管Gigabit乙太網路交換器，配備2個10/100/1000Base RJ-45網路埠及2個100/1000Base SFP光纖埠可支援長距離傳輸，兩個傳輸SFP介面提供100或1000SFP兩種速率，可透過指撥鍵(DIP switch)設定。同時也支援daisy chain架構，若搭配益網科技網管型設備之架構，更可支援Alpha-chain網路備援協定。

EX41922支援10K Jumbo Frame support、full wire speed Gigabit throughput、QoS support，並符合eco-friendly IEEE 802.3az EEE (Energy Efficient Ethernet)標準。具備了強固級、高效能及節能等高性能，EX41922是網路延伸規劃中最具彈性且最可靠的解決方案。

EtherWAN — "When Connectivity is Crucial."

### 產品亮點

#### + 強固等級設計

寬溫操作 (-40 到75°C)  
雙備援電源輸入  
支援鋁軌式安裝

#### + 斷線告警

透過指撥開關設定告警，當發生斷電或斷線情形將發出告警至使用者端

#### + 光纖介面連接

最高可支援兩埠 100/1000BASE SFP 可搭配 daisy chain 或 Alpha-chain 之應用  
可透過 DIP 指撥器調整速率為 100BASE 或 1000BASE

#### + 支援全 Gigabit 頻寬及 Jumbo frame

Gigabit 全線速傳輸，滿足高頻寬需求之應用  
Jumbo frames 最高可支援 10K bytes 以強化傳輸效能

## 產品規格

### + Technology

#### Standards

IEEE802.3 10BASE-T  
IEEE802.3u 100BASE-TX/100BASE-FX  
IEEE802.3ab 1000BASE-T  
IEEE802.3z 1000BASE-SX/1000BASE-LX  
IEEE802.1x, Full duplex flow control  
IEEE802.1az Energy Efficient Ethernet

#### Forward and Filtering Rate

14,880pps for 10Mbps  
148,810pps for 100Mbps  
1,488,100pps for 1000Mbps

#### Packet Buffer Memory

1MB

#### Processing Type

Store-and-Forward  
Auto Negotiation  
Half-duplex back-pressure and IEEE802.3x full-duplex flow control  
Auto MDI/MDIX

#### Jumbo Frame

10K bytes

#### Address Table Size

8K MAC addresses

#### Broadcast Storm Protection Threshold

Limit 15,000 packets per second.

### + Interface

#### Ethernet Ports

10/100/1000BASE-T: 2 ports  
100/1000BASE SFP: 2 ports

#### LED Indicators

Per Unit: Power1 (Green), Power2 (Green), Alarm (Red)

Per Port: Link & Activity (Green)

#### DIP Switches

Enable/Disable Port fault alarm, SFP port on 100BASE.

#### Alarm Contact

One relay output with current 1A@250VAC  
Supports normal close and normal open

### + Environment

#### Operating Temperature

-40 to 75°C (-40 to 167°F)

#### Storage Temperature

-40 to 85°C (-40 to 185°F)

#### Ambient Relative Humidity

5% to 95% (non-condensing)

## + Power

### Voltage

12~48VDC

### Power Consumption

3.2W Max. 0.26A@12VDC

0.13A@24VDC

0.06A@48VDC

## + Mechanical

### Casing

Metal case

IP30

### Dimensions

36 x 90 x 100mm (W x D x H)

(1.42" x 3.54" x 3.94")

### Weight

0.25Kg (0.55lb)

### Installation

DIN-Rail

## + Regulatory Approvals

### ISO

Manufactured in an ISO 9001 facility

### EMI

FCC Part 15B Class A

VCCI Class A

EN 61000-6-4

### EMS

EN 61000-6-2

- EN 61000-4-2 (ESD Standards)
- EN 61000-4-3 (Radiated FRI Standards)
- EN 61000-4-4 (Burst Standards)
- EN 61000-4-5 (Surge Standards)
- EN 61000-4-6 (Induced RFI Standards)
- EN 61000-4-8 (Magnetic Field Standards)

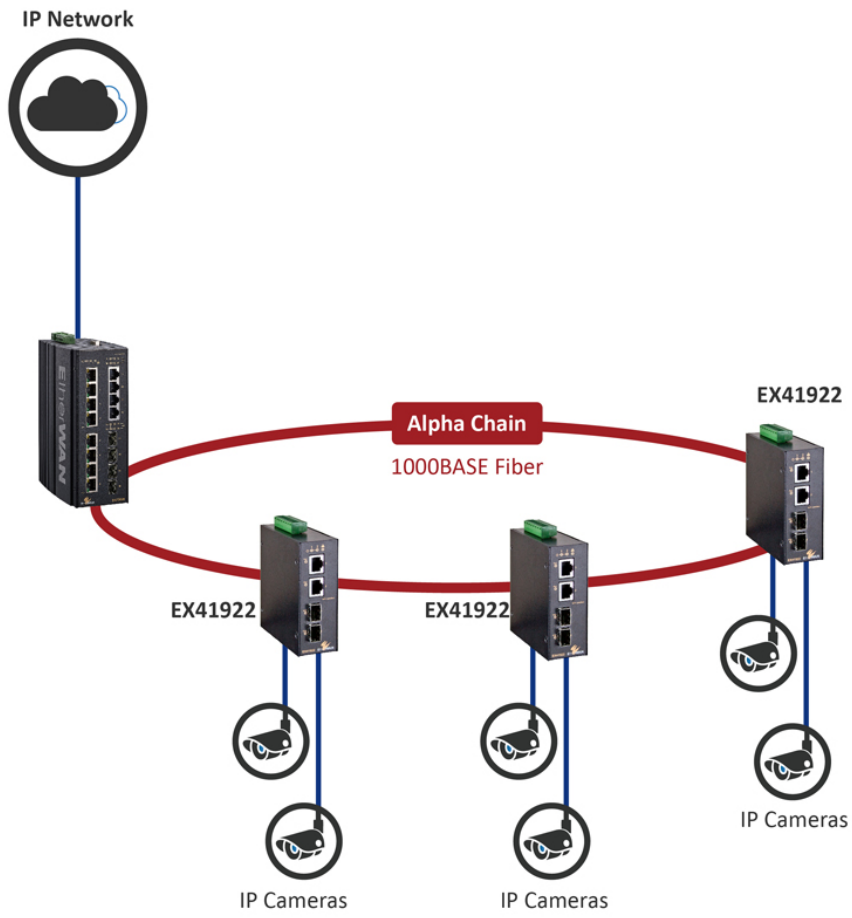
### Environmental Test Compliances

IEC 60068-2-6 Fc (Vibration)

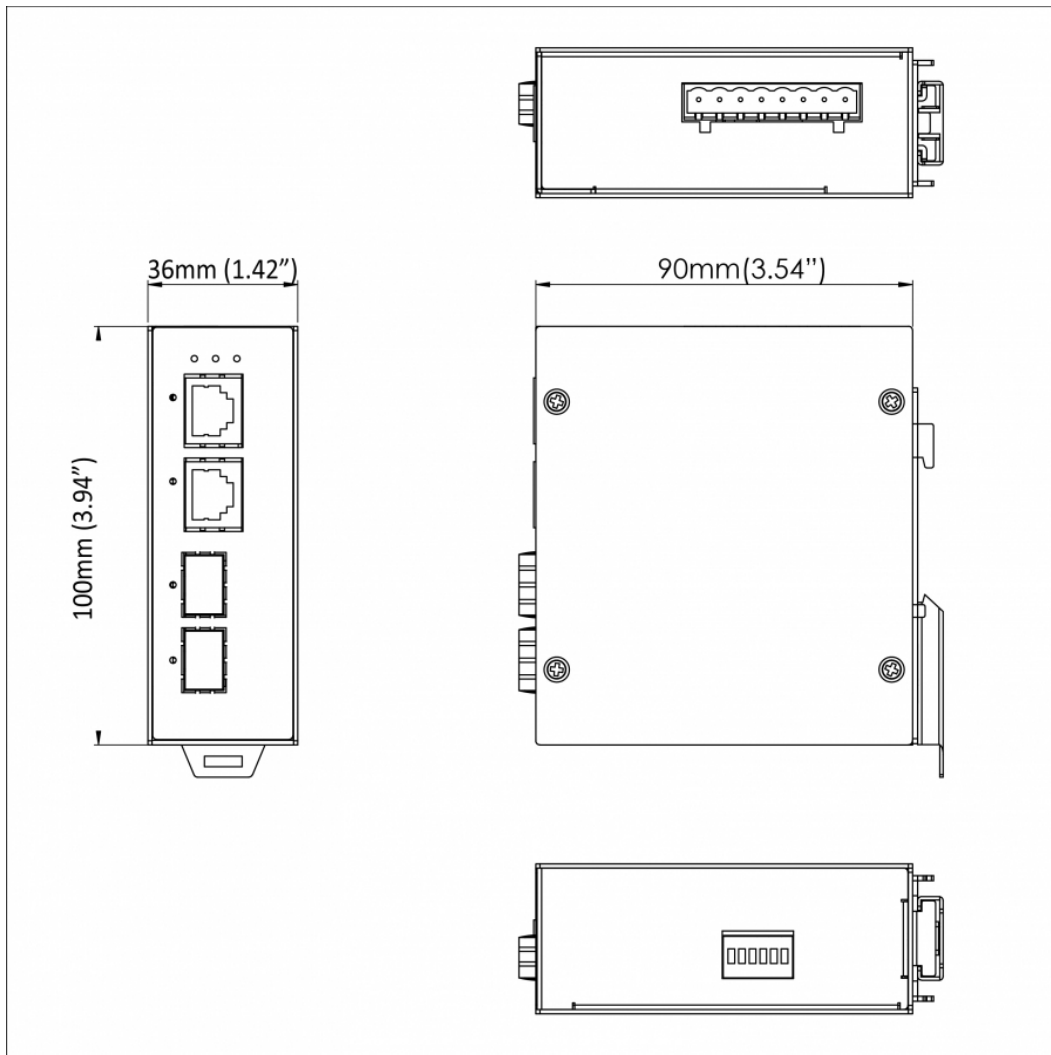
IEC 60068-2-27 Ea (Shock)

FED STD 101C Method 5007.1 (Free fall w/ package)

# 產品應用圖



## 產品尺寸圖



## 訂購型號

### + 型號

<b>EX41922</b>	2-port 10/100/1000Base-T +2-port 100/1000 SFP Hardened Unmanaged Ethernet Switch
----------------	--

\* DIN-Rail mounting kit included.

