

# EPOW SERIES

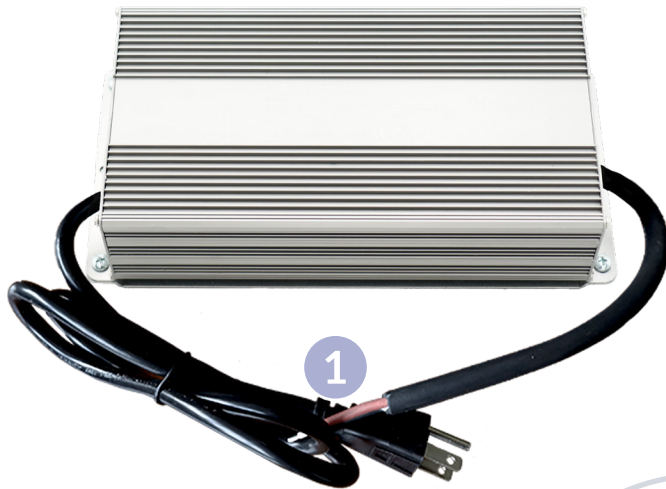
## HARDENED NEMA TS2 POWER SUPPLIES

Fanless, heat-resistant, & element proof-perfect for unventilated spaces.

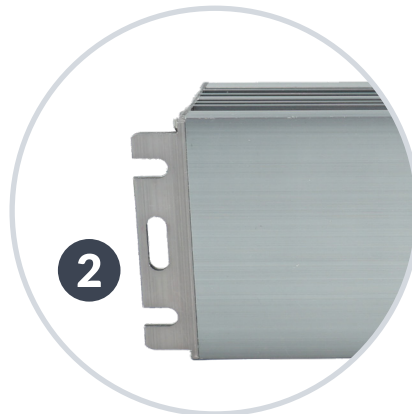


**EtherWAN**  
When Connectivity is Crucial

### EPOW-54-600



### EPOW-24-60



1

#### **AC & DC Wires Preattached**

No need to attach external AC & DC wires

2

#### **Easy Install**

Mounting holes to install outdoors and/or in cabinets

3

#### **Hardened-Grade**

-40°F to 167°F operating temperature

4

#### **NEMA TS2 Durability**

High impact, thermal shock, and electrical noise resistance

5

#### **IP67 Rated**

Total dust protection and water resistance

6

#### **Fanless**

Fanless operation increases MTBF

7

#### **Electrical Protection**

OVP and OCP to reduce electrical failures

8

#### **Reliable Power Delivery**

Constant voltage across output terminal

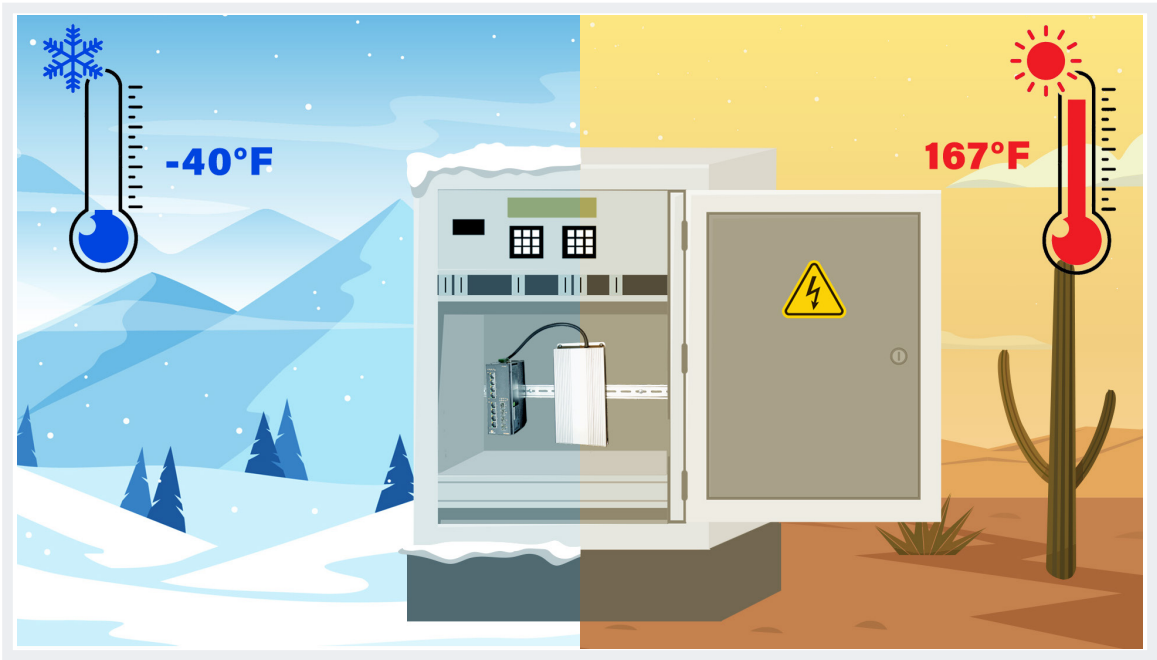
MODELS

Model	
EPOW-54-600	Power Supply, Hardened (-40°F - 167°F) External 100-277 VAC Input; NEMA-TS2 rated; 600W, 54VDC, 0-11.1A with Open Wire (US Plug)
EPOW-24-60	Power Supply, Hardened (-40°F - 167°F) External 100-277 VAC Input; NEMA-TS2 rated; 60W, 24VDC, 0-11.1A with Open Wire (US Plug)

Scan the QR for more product details  
and ordering information



Application Diagram



Accessories & devices



**EasyLink Series**  
Preconfigured IP67 Wireless Bridge Kit



**EX78900X Series**  
Hardened Managed 12-Port Gigabit PoE and 4-Port 10G SFP+ Ethernet Switch



**EX73900X Series**  
Hardened Managed 12-Port Gigabit and 4-Port 10G SFP+ Ethernet Switch



**EVOLTSlice-4**  
Easy Lever Wire Connector 2 in 4 out Wire Splitter

## About EtherWAN

EtherWAN is a leader in useful and easy to configure networking solutions. Our products are built to support the long-term health of your network and come in a wide variety of form factors. Designed to operate in a number of environmental conditions, they provide the right networking solution for urban infrastructure communication applications.

Founded in 1996 by NASA engineers, EtherWAN provides Ethernet connectivity solutions for Urban Infrastructure with a core focus on reliability in extreme environments. In-house product design, engineering, and manufacturing are structured to provide quality for crucial connectivity applications.



### **Tech Support**

US-based tech support provides guidance throughout the project life-cycle. Get support onsite or over the phone.



### **Quality**

To ensure high performance, our products undergo rigorous 100% burn-in testing in extreme temperatures (175°F+) under a heavy data load.



### **Training for Real-World Applications**

Our industry- specific network and product-focused courses are offered online and in-person for easy accessibility.



### **Purpose-Built Products**

Products are designed, tested and manufactured in-house to ensure the highest quality solutions for specific applications.



### **Customer Experience Lab**

Train employees and make educated buying decisions with hands-on access to mock traffic intersections, TMC, a variety of IP cameras, and more.



### **Cost Savings**

Reduce installation time and costs through flexible network solutions, whether installing new cabling or utilizing existing systems.

Contact us for more information on how we can help you design your network.



### **US Headquarters**

2301 E. Winston Road, Anaheim, CA 92806

**TEL:** +1-714-779-3800

**FAX:** +1-714-779-3806

**Email:** [marketing@etherwan.com](mailto:marketing@etherwan.com)

Copyright © 2022 EtherWAN Systems, Inc.  
All rights reserved.