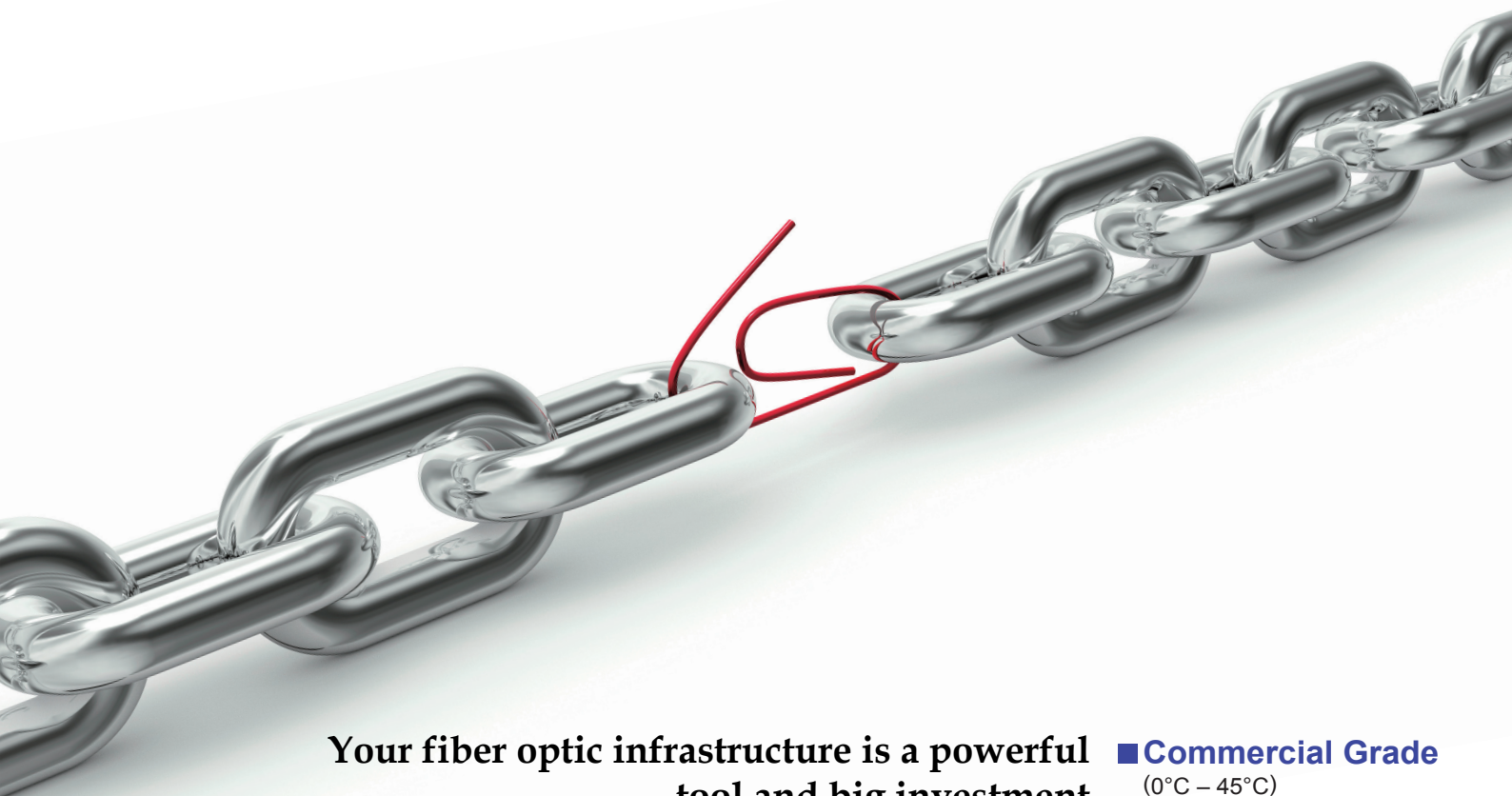


The most complete line of **Media Converters**

Technology

Application

Product



Your fiber optic infrastructure is a powerful tool and big investment.

Don't risk it to a weak link

Insure with EtherWAN's high reliability
Media Converters, Today.

■ **Commercial Grade**
(0°C – 45°C)

■ **Hardened Grade**
(-40°C – 75°C)

■ **Gigabit Ethernet**
media converters

■ **Dual-speed**
media converters

■ **Central Chassis**
options



EtherWAN provides conversion products to handle everything from legacy serial interfaces to sophisticated fiber optic interfaces, i.e. multi-mode, single-mode, or WDM with different distance selections and SC, ST, LC or MT-RJ connectors. All of these selections may be installed in climate controlled rooms or harsh outdoor environments. EtherWAN is not only keen on network design know-how but insists on controlled processes, from industrial-grade component selections to comprehensive design verifications, to guarantee the best quality assurance. Products are required to pass real-time data transfer test under -40°C to 85°C up to 72 hours no compromise. More default reliability tests include vibration, drop, electrostatic discharge immunity, electrical fast transient and burst immunity, surge immunity, EMI radiation and conduction are all done in EtherWAN labs. When you are working on mission-critical Ethernet applications, always have EtherWAN on your list and remember "the power is in the network".

→ Gigabit Media Converters

EL9100

Hardened 10/100/1000BASE-TX to 1000BASE-SX/LX/BX Media Converter

D P R

EL9000

Hardened 1000BASE-T to 1000BASE-SX/LX/BX Media Converter

D P R

EL9020

Hardened 10/100/1000BASE-TX to Gigabit SFP Media Converter

D P R

EL2326 (hidden fiber tray)

Managed 10/100/1000BASE-TX to 100/1000BASE-X Dual Rate Media Converter

W

EL2326L (hidden fiber tray)

10/100/1000BASE-TX to 1000BASE-SX/LX/BX Media Converter

W

EL2321

Managed 10/100/1000BASE-TX to 100/1000BASE-X Dual Rate Media Converter

W C

EL2315

10/100/1000BASE-TX to 100/1000BASE-X Dual Rate SFP Media Converter

W C

EL2211

10/100/1000BASE-TX to 1000BASE-SX/LX/BX Media Converter

W C

EM1000/2000

1000BASE-T to 1000BASE-SX/LX/BX Media Converter

W C

EM1020

1000BASE-T to Gigabit SFP Media Converter

W C

EM1000S/2000S

1000BASE-SX/LX to 1000BASE-LX/BX Media Converter

W C



C Chassis D DIN-Rail P Panel R Rack W Wall

Product Highlight

Model	RJ45 Interface		Fiber Interface			Power Input	Management	Operating Temp.
	1000BASE	10/100/1000BASE	100/1000 Dual Rate	Fixed Fiber	SPF			
EL9100	-	1	-	1	-	12-48VDC	-	-40°C to 75°C
EL9000	1	-	-	1	-	12-48VDC	-	-40°C to 75°C
EL9020	-	1	-	-	1	12-48VDC	-	-40°C to 75°C
EL2326	-	1	✓	1	1	12VDC w/ AC PSU	✓	-5°C to 55°C
EL2326L	-	1	-	1	-	12VDC w/ AC PSU	-	-5°C to 55°C
EL2321	-	1	✓	1	1	12VDC w/ AC PSU	✓	0°C to 50°C
EL2315	-	1	✓	-	1	12VDC w/ AC PSU	-	0°C to 50°C
EL2211	-	1	-	1	-	12VDC w/ AC PSU	-	0°C to 45°C
EM1000/2000	1	-	-	1	-	12VDC w/ AC PSU	-	0°C to 45°C
EM1020	1	1	-	-	-	12VDC w/ AC PSU	-	0°C to 50°C
EM1000S/2000S	-	-	-	2	-	12VDC w/ AC PSU	-	0°C to 45°C



How do we make the difference?

- 1 Designed for critical infrastructure
- 2 Certified by international organizations in compliance with various industry standards
- 3 Supports -40°C to 75°C hardened operating temperature range (tested @ 85°C)
- 4 Designed to resist high ESD for the best reliability in harsh environments
- 5 Smart LFPT design to enhance the convenience of network management
- 6 Variety of optical fiber selections for distance and connection type
- 7 Various transmission interfaces from CAT5e/6, twisted pair, coaxial cable to fiber optics
- 8 Redundant power inputs and relay contact design for alarm connections
- 9 Ease of installation for rack-mount, DIN-rail mount, wall-mount, panel-mount and standalone



10/100BASE Media Converters

EL1141

IEC61850/IEEE1613 Hardened 10/100BASE-TX to 100BASE-FX Media Converter

D P R

EL900

Hardened 10/100BASE-TX to 100BASE-FX Media Converter

D P R

EX42011

Industrial 10/100BASE-TX to 100BASE-FX Media Converter

D

EL1216 (hidden fiber tray)

10/100BASE-TX to 100BASE-FX Media Converter

W

EL100/200

10/100BASE-TX to 100BASE-FX Media Converter

W C

EL110/210

100BASE-T to 100BASE-FX Media Converter

W C

EL50

Mini-sized 10/100BASE-TX to 100BASE-FX Media Converter

W C



EX1605PBF1

4-port 10/100BASE-TX to 100BASE-FX Media Converter

W

EM120

100BASE-FX Multi-mode/Single-mode to 100BASE-FX Single-mode Media Converter

W C

EN303

PCI-Bus 10/100BASE-TX to 100BASE-FX Media Converter

C Chassis D DIN-Rail P Panel R Rack W Wall

Product Highlight

Model	RJ45 Interface		Fiber Interface		Power Input	Operating Temp.
	100BASE	10/100BASE	100BASE			
EL1141	-	1	1		12-48VDC	-40°C to 75°C
EL900	-	1	1		12-48VDC or 24VAC	-40°C to 75°C
EX42011	-	1	1		12-48VDC	-10°C to 60°C
EL1216	-	1	1		12VDC w/ AC PSU	0°C to 50°C
EL100/200	-	1	1		12VDC w/ AC PSU	0°C to 45°C
EL110/210	1	-	1		12VDC w/ AC PSU	0°C to 45°C
EL50	-	1	1		12VDC w/ AC PSU or 24VAC	0°C to 45°C
EX1605PBF1	-	4	1		12VDC w/ AC PSU	0°C to 45°C
EM120	-	-	2		12VDC w/ AC PSU	0°C to 45°C
EN303	-	1	1		12VDC w/ AC PSU	0°C to 45°C

Media Converter

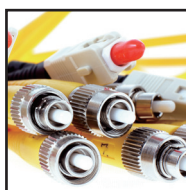
in Rack Mount based Installation

EMC1600

16-Bay Media Converter Chassis



- 1 House up to 16 Media Converters
- 2 Two power modules for power redundancy and load sharing
- 3 Over current protection and power isolation ensures each bay is electrically isolated
- 4 Standard 19" rack-mount size, two-unit-height supports Rack Mounting installation



Available Interfaces

One to house up to 16 media converters or Ethernet Extenders with versatile interfaces SC / ST / LC / MT-RJ / Copper / Coax

More Rack-mount based selections



EMC1200RGS

12-Bay Gigabit SFP Media Converter System

- Non-stop operation and minimal downtime
- Hot-swappable: redundant power supply modules
- Redundant 100 - 240VAC, 50 - 60Hz internal universal PSU, 48VDC power inputs with load sharing redundancy so there are no power outages if one power supply fails.



EMC1200R

12-Bay Media Converter System

- Non-stop operation and minimal downtime
- Hot-swappable: redundant power supply modules
- Redundant 100 - 240VAC, 50 - 60Hz internal universal PSU, 48VDC power inputs with load sharing redundancy so there are no power outages if one power supply fails.



EMMC800M

8-Bay Managed Media Converter Chassis System

- Hot-swappable in any slot when used with EMM100W or EMM100CO Media Converter
- EMM100W - Chassis Manager supports Chassis and EMM100CO/EMM100CP Status monitor and control
- EMM100CO - Chassis type media converter, managed by EMM100W
- EMM100CP - Standalone CPE media converter, managed by EMM100W
- Stackable up to four EMMC800M chassis
- Metal case, standard 19" rack-mount, one-unit-height

Product Highlight

Capability

Model	Bays	100BASE	1000BASE	Management	Power Input	Operating Temp.	Chassis Height
EMC1600	16	✓	✓	-	100-240VAC / ± 48VDC	0°C to 45°C	2U
EMC1200R	12	✓	✓	-	100-240VAC / ± 48VDC	0°C to 45°C	1U
EMMC800M	8	✓	-	✓	100-240VAC	0°C to 45°C	1U



PoE Media Converters



EL1032P

Industrial 10/100BASE-TX to 100BASE-FX
Media Converter with high-power PoE/PSE

D P

EL1032

Industrial 10/100BASE-TX to 100BASE-FX
Media Converter with PoE/PSE

D P

EL1033

Industrial 10/100BASE-TX to 100BASE-FX
Media Converter with PoE/PD

D P

D DIN-Rail **P** Panel

Product Highlight

Model	RJ45 Interface	Fiber Interface	PoE	Power Input	Operating Temp.
	10/100BASE	100BASE			
EL1032P	1	1	30W PSE	48VDC	-10°C to 60°C
EL1032	1	1	IEEE802.3af PSE	48VDC	-10°C to 60°C
EL1033	1	1	IEEE802.3af PD	48VDC	-10°C to 60°C



Serial Device Servers



SE5100

Industrial 1-port Serial Device Server

D P

SE6100

Hardened 1-port Serial Device Server

D P

SE5300

Industrial 2/4 ports Serial Device Server

D P

SE6300

Hardened 2/4 ports Serial Device Server

D P

FT5702

Industrial 2-port RS232/422/485 Self-Healing Ring
Fiber Modem

D P

D DIN-Rail **P** Panel

Product Highlight

Model	RJ45 Interface	Fiber Interface	Serial Interface	Serial Speed	Isolation	Power Input	Operating Temp.
	10/100BASE	100BASE					
SE5100	1	1	1	Up to 460.8Kbps	–	12–32VDC	-10°C to 60°C
SE6100	1	1	1	Up to 460.8Kbps	–	12–32VDC	-25°C to 75°C
SE5300	2 (Redundancy)	2 (Redundancy)	2/4	Up to 460.8Kbps	SE5320*	12–32VDC	-10°C to 60°C
SE6300	2 (Redundancy)	2 (Redundancy)	2/4	Up to 460.8Kbps	SE6320*	12–32VDC	-25°C to 70°C
FT5702	–	2 (Self-healing Ring)	2	Up to 460.8Kbps	–	12–32VDC	-10°C to 60°C

* Models with RS-422/485 support. All others are with RS-232/422/485 support.

EtherWAN Systems, Inc.

US Office

4570 E. Eisenhower Circle, Anaheim, CA 92807

TEL: +1-714-779-3800

FAX: +1-714-779-3806

Email: info@etherwan.com

Pacific Rim Office

8F, No. 2, Alley 6, Lane 235, Baoqiao Rd.,

Xindian District, New Taipei City 231, Taiwan

TEL: +886-2-6629-8986

FAX: +886-2-6629-7758

Email: info@etherwan.com.tw

www.etherwan.com

2013 EtherWAN Systems Inc. All rights reserved.

69G-EW13100AC