

The screenshot displays the EtherWAN eVue web interface. On the left is a navigation menu with options: Topology, Devices, List, EtherWAN Discovery, IP Search, Identity, Firmware Management, Events, Settings, and About. The main area shows a network topology diagram with several nodes (L1 and L2) and their interconnections. Below the diagram is a status bar with colored indicators and a table of events.

| ID | Severity | Time | Service | Node | Message |
|-----|----------|---------------------|--------------|--------------|----------------------------|
| 583 | Normal | 2021/09/28 13:24:50 | Login | server | User 'admin' logged in |
| 582 | Cleared | 2021/09/28 11:25:11 | ping-monitor | 192.168.1.97 | Ping 192.168.1.97 is up. |
| 581 | Critical | 2021/09/28 11:24:13 | ping-monitor | 192.168.1.97 | Ping 192.168.1.97 is down. |
| 580 | Normal | 2021/09/28 11:23:54 | Login | server | User 'admin' logged in |

Product Highlights

- ➔ Automatically discover and visualize network devices
- ➔ Monitor events and notifications via email
- ➔ Real-time network link status and link usage monitoring
- ➔ Supports up to 512 nodes
- ➔ 10 times performance improvement over the previous eVue

Overview

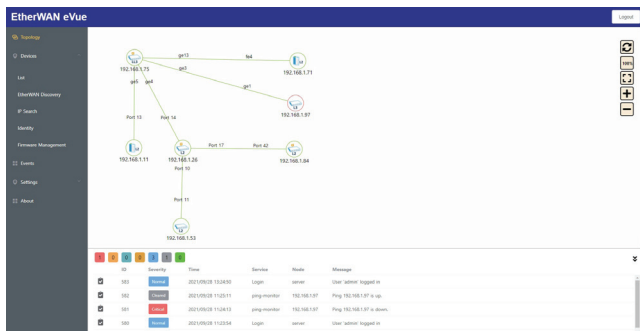
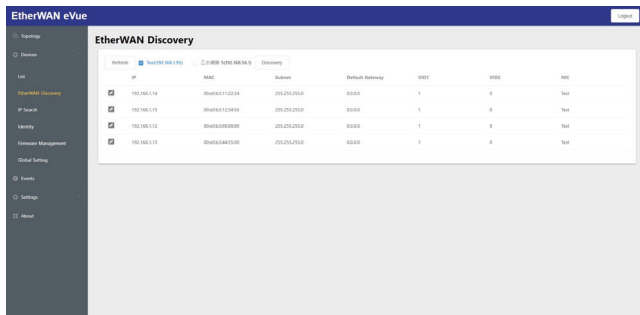
EtherWAN's eVue is web-based network management software designed with SNMP communication standards for all EtherWAN managed Ethernet devices. eVue consists of device discovery, device list, event management, topology view and firmware management. These functions are displayed in a friendly user interface to help simplify network configuration, administration, monitoring, and troubleshooting.

Software Features

Automatically Discover and Visualize Network Devices +

Discover EtherWAN devices on the network

Visualization of the network topology

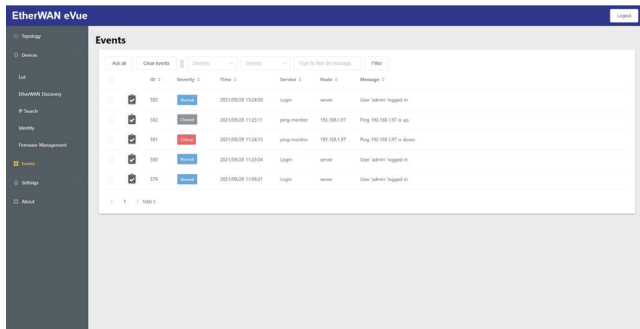


Event Management +

Tiered event severity levels (critical, major, warning, normal, cleared, and indeterminate) by colors

Notification via email or SNMP trap

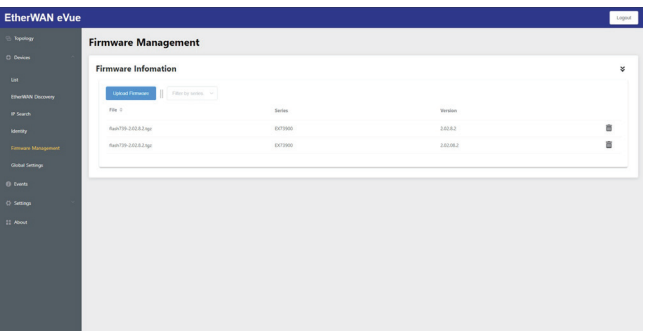
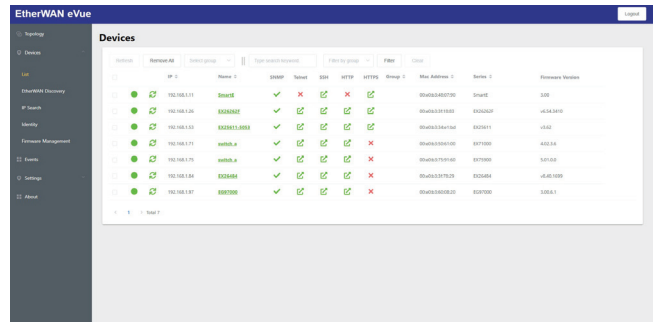
Event export



Network Management +

Remote configuration of network devices via Telnet, SSH, HTTP and HTTPS

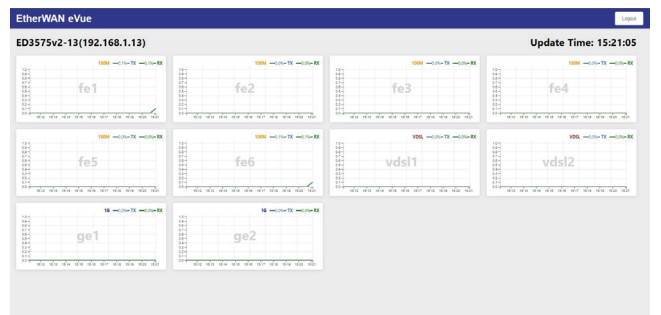
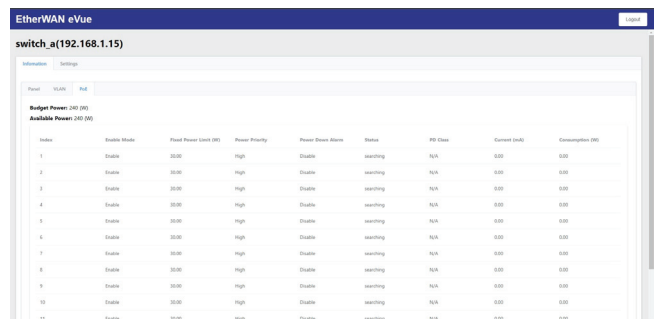
Multi-device and scheduled firmware upgrades



Availability Monitoring +

Status display for device, VLAN and PoE

Monitor device network utilization



System Requirements

| | |
|------------------|--|
| CPU | Intel i5 2.5GHz and above |
| RAM | 4GB and above |
| Hard Disk | 1TB, 7200 RPM, SATA-3Gb/s or higher |
| Operating System | Windows 10 (64-Bit) |
| Browser | Microsoft Edge, Chrome v64 or later, Firefox v58 or later, Safari 11.11.1 or later |