

# 41-136046

36W/3A 12VDC Hardened Power Adapter with Open Wire  
in Aluminum Housing



## Features

- The 41-136046 power adapter can be used with the following EtherWAN models:
  - EX33000, EX35000, EX41000, EX43000, EX47000, EX61000, EX61000A, EX62000, EX63000, EX65000, EX71000, EX72000, EX73000, EX95000, EX96000, EL1141, EL900, EL9000, EL9020, EL9100, ED3341, ED3344, ED3141, and ED3171 Series.
- Complies with NEMA TS1 & TS2 environmental requirements for traffic control equipment



## Hardware Specifications

### Power

#### Input Rating

- 90 - 264VAC (47 - 63Hz)

#### Output Rating

- 36W, 12VDC, 0 - 3A

### Mechanical

#### Casing

- Aluminum case

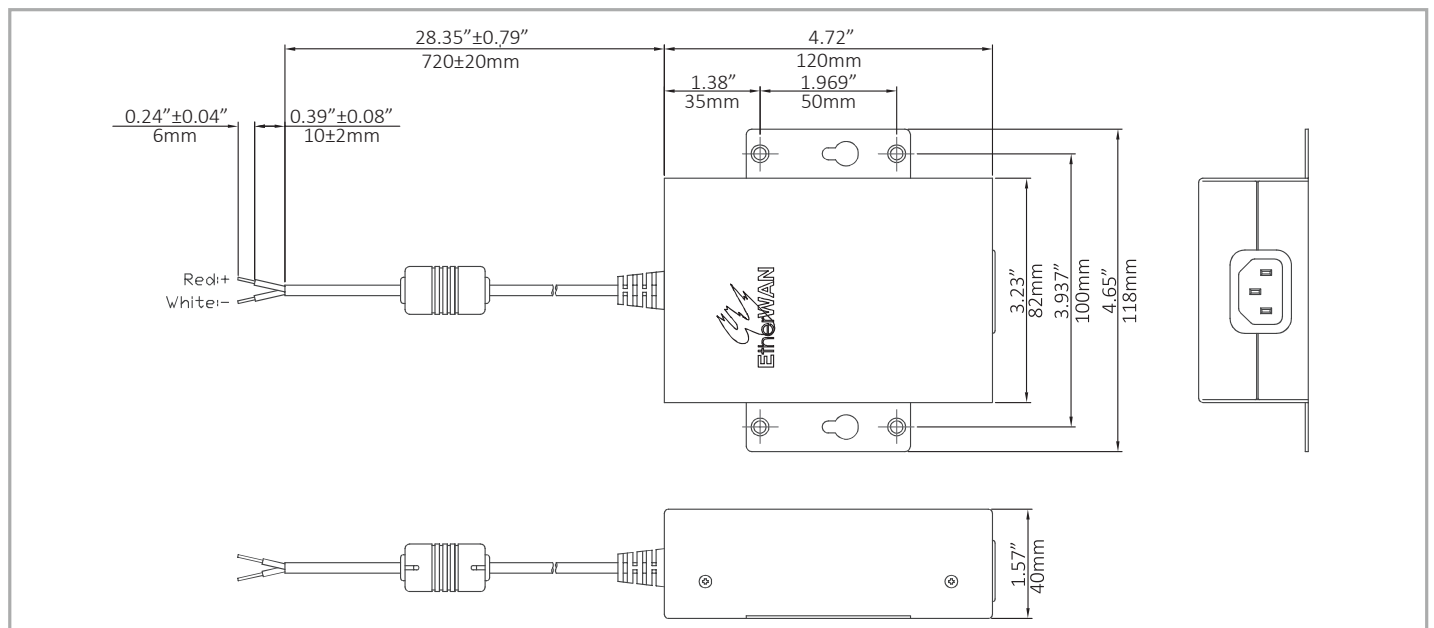
#### Operating Temperature

- -40°C to 75°C (-40°F to 167°F)

#### Output Connector

- Open wire for terminal block

## Dimensions



## Ordering Information

### Model

<b>41-136046-X</b>	36W/3A 12VDC Hardened Power Adapter
<b>41-136046-U</b>	45W 12VDC Level 6 Hardened Power Adapter (for US and Canada only)

### Input Plug Options (X)

<b>2</b>	EU
<b>3</b>	UK
<b>4</b>	AU
<b>5</b>	JP
<b>6</b>	SA