

8/16-port 10/100Base Fast Ethernet Web-Smart PoE Ethernet Switch

This quick start guide describes how to install and use the 8-port 10/100Base Fast Ethernet Web-Smart PoE Ethernet Switch. This is designed to provide power to PoE driven devices.

Physical Description

The Port Status LEDs and Power Inputs



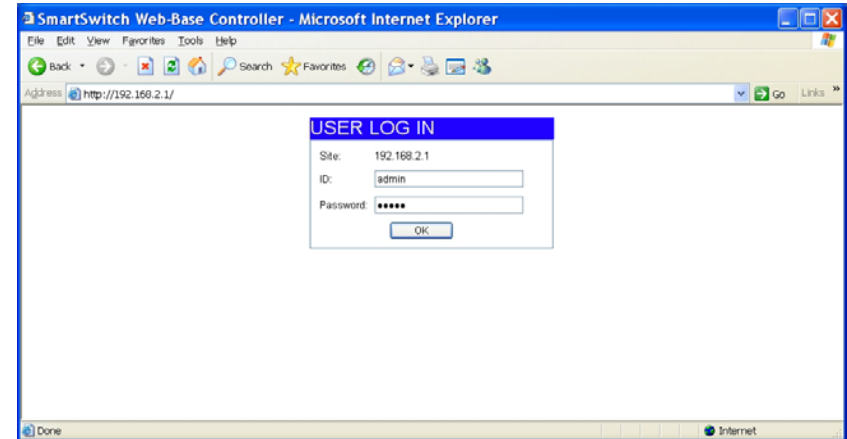
LED	State	Indication
10/100Base-TX		
Link/ACT	Steady	A valid network connection established.
	Flashing	Transmitting or receiving data. ACT stands for ACTIVITY.
PoE	Steady	Power Device (PD) is connected.
	Off	Power Device (PD) is disconnected.

Functional Description

- Supports IEEE802.3af Power over Ethernet (PoE) Power Sourcing Equipment (PSE).
- Full PoE Power supplies up to 15.4W per port.
- 1024 MAC addresses. 512K bits buffer memory.
- PoE (Power status, Link status) through the Web browser interface.
- Administrator, Port Management, VLAN Setting, Per Port Counter, Trunk Setting, QoS Setting, Security Filter, Configuration Backup/Recovery, and Miscellaneous through the Web browser Interface.
- 10/100Mbps-Full/Half-duplex, Auto-Negotiation, Auto-MDI/MDIX.
- Full wire-speed forwarding rate.
- 100~240VAC, 50~60Hz Internal Universal PSU.
- 0°C to 45°C (32°F to 113°F) operating temperature range.
- Metal case.
- Supports Desktop and Rack Mounting installation.
- The ITE is to be connected only to PoE networks without routing to the outside plant.

Web Configuration

- Login the switch:
Specify the default IP address (192.168.2.1) of the switch in the web browser. A login window will be shown as below:



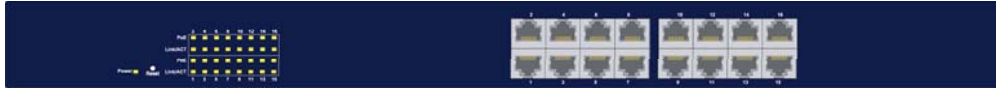
- Enter the factory default login ID: admin.
Enter the factory default password: admin.
Then click on the "OK" button to log on to the switch.

8/16-port 10/100Base Fast Ethernet Web-Smart PoE Ethernet Switch

This quick start guide describes how to install and use the 16-port 10/100Base Fast Ethernet Web-Smart PoE Ethernet Switch. This is designed to provide power to PoE driven devices.

Physical Description

The Port Status LEDs and Power Inputs



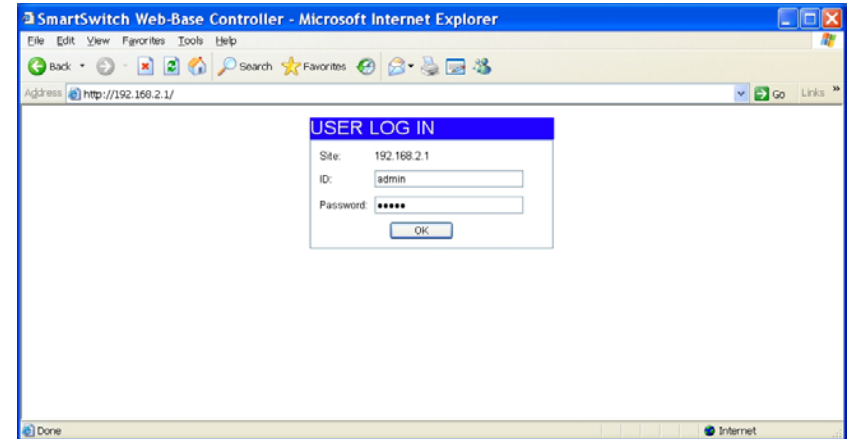
LED	State	Indication
10/100Base-TX		
Link/ACT	Steady	A valid network connection established.
	Flashing	Transmitting or receiving data. ACT stands for ACTIVITY.
PoE	Steady	Power Device (PD) is connected.
	Off	Power Device (PD) is disconnected.

Functional Description

- Supports IEEE802.3af Power over Ethernet (PoE) Power Sourcing Equipment (PSE).
- Full PoE Power supplies up to 15.4W per port.
- 4096 MAC addresses. 1.5M bits buffer memory.
- PoE (Power status, Link status) through the Web browser interface.
- Administrator, Port Management, VLAN Setting, Per Port Counter, Trunk Setting, QoS Setting, Security Filter, Configuration Backup/Recovery, and Miscellaneous through the Web browser Interface.
- 10/100Mbps-Full/Half-duplex, Auto-Negotiation, Auto-MDI/MDIX.
- Full wire-speed forwarding rate.
- 100~240VAC, 50~60Hz Internal Universal PSU.
- 0°C to 45°C (32°F to 113°F) operating temperature range.
- Metal case.
- Supports Rack Mounting installation.
- The ITE is to be connected only to PoE networks without routing to the outside plant.

Web Configuration

- Login the switch:
Specify the default IP address (192.168.2.1) of the switch in the web browser. A login window will be shown as below:



- Enter the factory default login ID: admin.
Enter the factory default password: admin.
Then click on the “OK” button to log on to the switch.

